

WOODLAND FIREWOOD PROCESSOR

FP130

01/01/2026



Owner's Manual



Table of Contents

Introduction.....	3
Product.....	4
Safety.....	5
Assembly.....	7
Preparations.....	19
Operating.....	19
Maintenance.....	19
Chainsaw bar.....	19
Spare parts.....	19
Explod drawing	20

Introduction

Congratulations on your purchase and welcome to Woodland Mills. This manual gives you the necessary information about your machine so you will be able to use it properly. The entire manual must be read and understood before you start using the machine. If any questions should arise that are not covered by this manual, please contact our customer service.

OWNER'S RECORD

Please take a moment to record the following information about your wood processor. If you need to call for assistance, please be ready to provide your model and serial numbers. This information will allow us to help you more quickly when you call.

MODEL NUMBER

SERIAL NUMBER

DATE OF PURCHASE

Product

A very efficient and user friendly log splitter that cuts and splits the log in one operation. Produces about 1 cord an hour. Splits logs up to 21" long and 13" in diameter. Equipped with automatic splitter which means that the splitter starts automatically after the log is cut. The saw chain is activated by a button on the saw chain handle and stops automatically when not in use. This ensures high safety, lower noise and longer life of both chain and bar.



Technical Specifications

SPECIFICATIONS	FP130
Max splitting force	7 ton
Max log diameter	13" / 33 cm
Max cutting length	21" / 53 cm
Log production	1 cord/hr / ca 5 m ³ / time
Gas Motor	14HP Rehlco-Kohler
Saw chain (length - gauge - pitch)	0.058" x 0.325" x 76
Weight	880 lbs
Splitting blade	2 - 4-way splitter
Oil viscosity	ISO 32
Hydraulic oil capacity	20L

Safety

The machine may only be used in the manner prescribed in this manual. Deviations may lead to health and safety requirements not being met. The user is responsible to read through the instructions and follow them properly.



WARNING!

Never tamper with the machine's functionality or construction. It may lead to a deterioration of safety!



WARNING!

Never leave the machine unattended during operation!

Operation safety

The machine may only be used by one person at a time. No other than the user may stay in the risk area around the machine. The risk area covers 9' around the machine.

Personal safety

Protective equipment must be used while operating the machine.

Machine safety

The machine is intended for use in an outdoor environment and for log splitting only. To obtain best functionality, do not split the logs into pieces shorter than 12".



WARNING!

Check before each use that the auto splitter stops when the protective cage is opened! If this feature does not work, the machine must not be used!



WARNING!

Never use a defective machine!
Be careful when cutting and splitting the log!

Emergency stop

The machine is equipped with an emergency stop which stops the whole machine. The emergency stop is placed on the electric switchboard.



WARNING!

Connections and reparations of the machine's electrical equipment may only be performed by an authorized person!

Symbol explanation



**Wear
safety
goggles**



**Wear
protective
clothing**



**Wear
protective
clothing**



**Wear
safety
helmet**



**Wear
hearing
protectors**



**Wear
safety
gloves**

Assembly

1. Remove processor and all parts from the steel shipping crate.
2. Insert axle through the processor ensuring it is centred and tighten the bolts to hold it securely in place. Note, it is important to ensure the two holes are facing up as they are used to hold the wheel fenders in place.



3. Place a liberal amount of grease on the inside of the wheel hubs and in the bearings (or use the grease nipples on the backside of the wheels). Insert greased bearing, washer and nut over axle spindle and tighten the nut. The cotter pin can be inserted into the hole in the end of the axle. Finally, the dust cap can be installed. See below images.



4. Install the fenders and attach to the axle using the two bolts as shown below.



5. The four lug nuts of each wheel should be torque to 90 ft-lbs.



6. Match hydraulic line 'B' up with fitting 'B' and tighten with a wrench. Do the same for 'F' to 'F'.



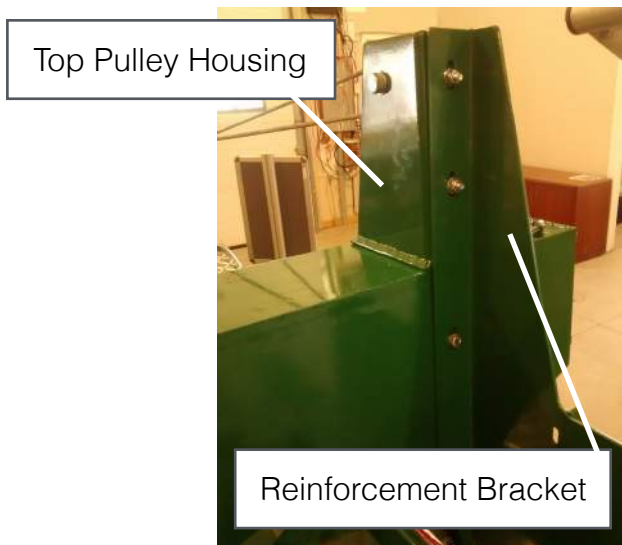
7. Install the chainsaw bar guard using the 3 bolts in the areas shown below. Do not fully tighten the bolts yet. This will be done in a further step.



8. Remove the adhesive backing from the chainsaw bar guard and position the bar oil tank in place. Tighten nut to securely hold it in place. Attach the oil line to the spout on the chainsaw bar as shown in below right image.



9. Install the back plate, reinforcement bracket, and the top pulley housing to the chainsaw bar guard using the bolts provided. Tighten all bolts including the bolts from step 7.



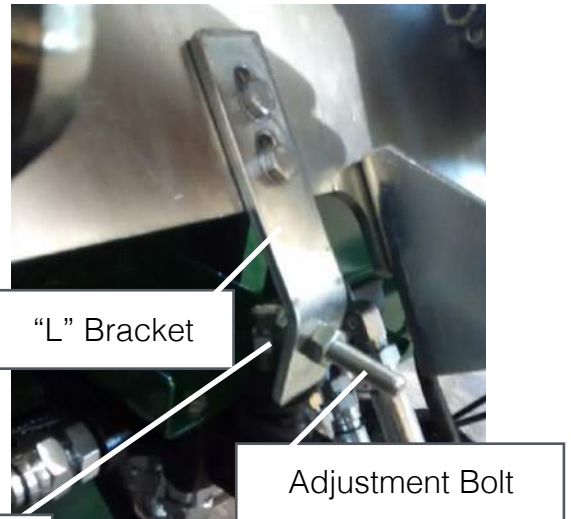
10. Install the chainsaw bar pull handle using the 2 bolts shown below.



11. Install the piston between the chainsaw bar handle and the back plate as shown below. Do not over tighten the bolt at the handle as it needs to be loose to enable it to rotate smoothly.



12. Uninstall the “L” shaped bracket, flip it over, and re-install it as shown below. A smooth transition motion is recommended. There are slots in both directions allowing positional adjustability to achieve proper actuation of valve. When the chainsaw bar handle is in the “up” position, the valve will be closed and the actuator rod will be at an angle. When the chainsaw bar handle is pulled down, the actuator rod will be in the straight position allowing the chain to engage, ready for cutting. The adjustment bolt can be spun in or out to the desired position for proper operation.



Actuator Rod

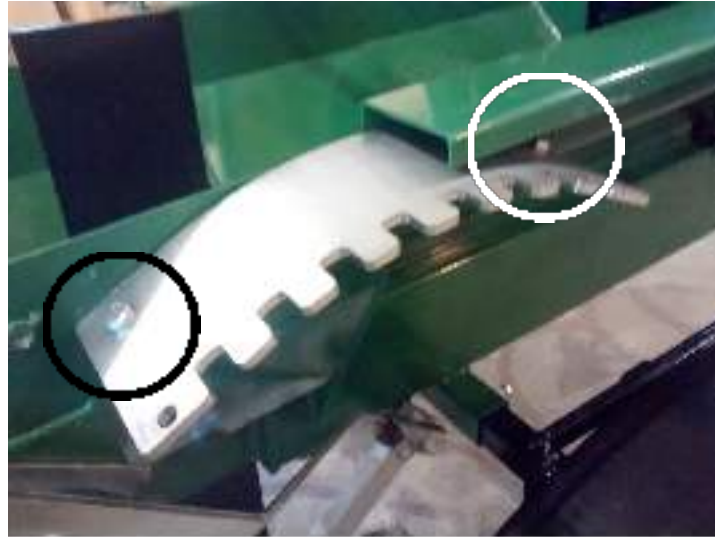
13. Install the cage guard in place and tighten the three bolts as shown below.



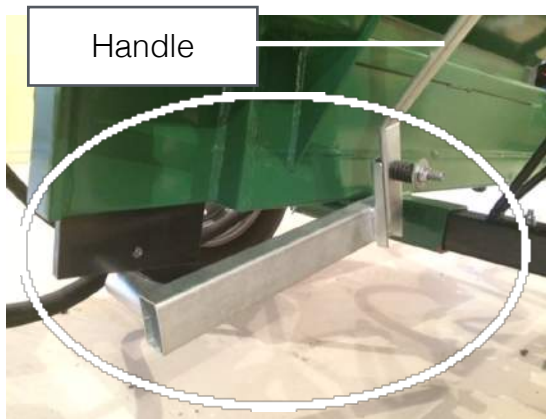
14. Install the larger cage by sliding the pipe into the hole and resting the other side on the bracket. Use the supplied bolt and nut to keep the bar in place so it can freely rotate open and closed.



15. Install the notched plate on the processor with the 2 nuts and bolts provided. This plate is used to lock the handle in place which holds the 2/4 way splitter is at the desired height.



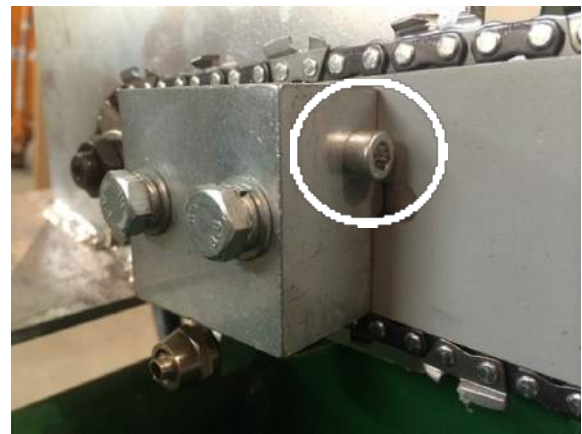
16. Install the 2/4 way splitter bottom support as shown below. The handle can also be installed at this point along with the 2/4 way splitter itself.



17. Install log deck roller assembly as shown in below images.



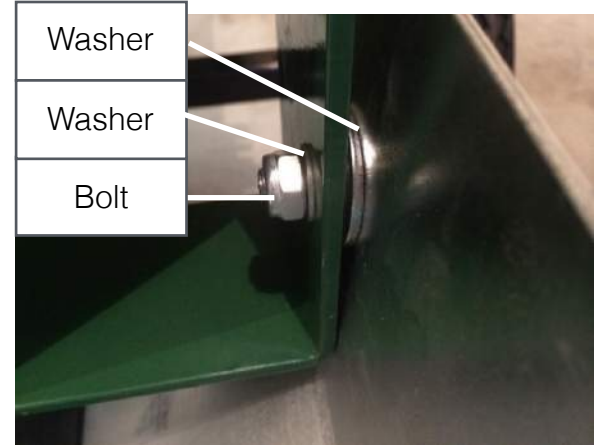
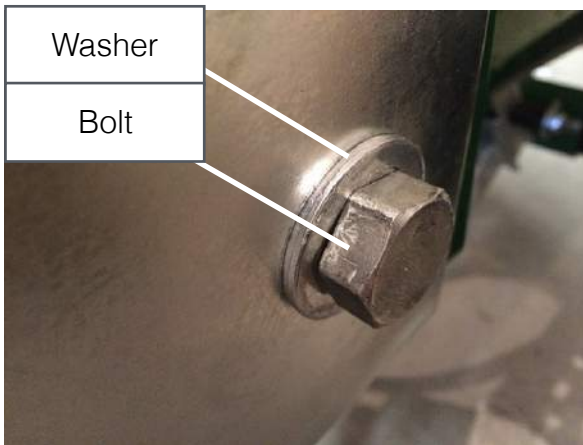
18. The chain can now be adjusted to ensure the tension is set correctly. Proper chain tension is achieved when the chain can be pulled away from the bar by hand $1/8'' - 1/4''$. To tighten or loosen the chain, the two bolts can be loosened using a 13mm wrench. Next, the allen key bolt can be turned clockwise to tighten or counter-clockwise to loosen the chain. The two M8 bolts can be tightened again to hold the bar securely. With the firewood processor now assembled, the conveyor system can be unpacked from the packaging and laid out, ready to be assembled and installed on to the processor.



19. Fit the conveyor belt over the bottom roller and assemble the galvanized steel bracket to the bottom of the conveyor using the 8 nuts and bolts provided.



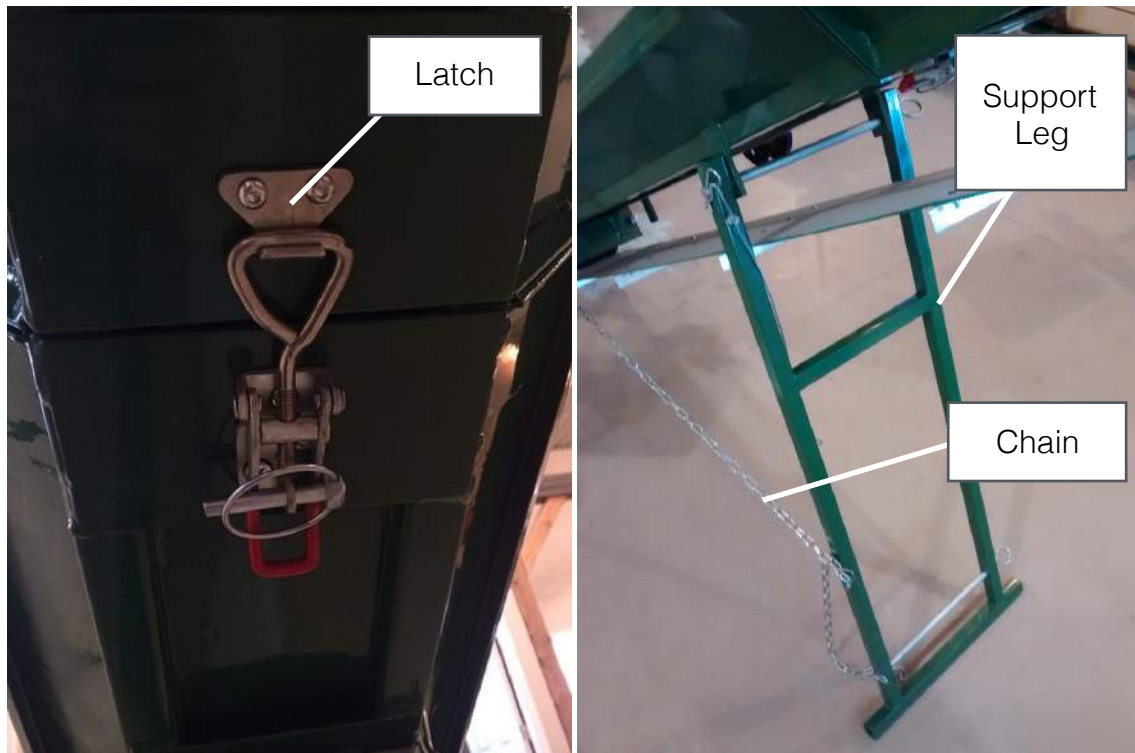
20. With the galvanized bracket now bolted to the conveyor, lift it in place so that it can be attached to the processor. A scissor jack or car jack can be used to aid in lifting the conveyor up into place so the mounting holes align.



21. The top half of the conveyor can now be installed to the bottom half by bolting it at the seam using the hardware shown below. Be sure to install one of the washers in between the top and bottom conveyor. The nut should be left loose so that the bolts act as a hinge and allow the conveyor system to fold in half. Also, be sure that the conveyor is looped around the top roller.



22. The top half can now be latched to the bottom half as shown below. Once latched in place, one person can begin to lift the conveyor up so another person can slide the support leg in place and latch the chain.



23. The conveyor belt can now be tightened by turning the “T” handles clockwise until the belt is taut. The conveyor can be aligned by turning either the left or right “T” handle when the machine is running. Small $\frac{1}{2}$ turn increments are recommended until the conveyor begins to track in the proper position.



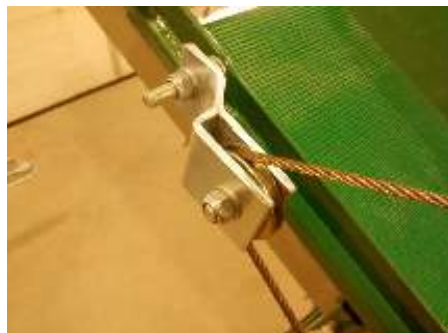
24. The hydraulic line should be connected to the conveyor motor using connections 'C' to 'C' and 'D' to 'D', Use a wrench to tighten.



25. Install the winch on the winch bracket as shown below.



26. Remove the pulley on the operator side of the conveyor, feed the cable through and re-install the pulley.



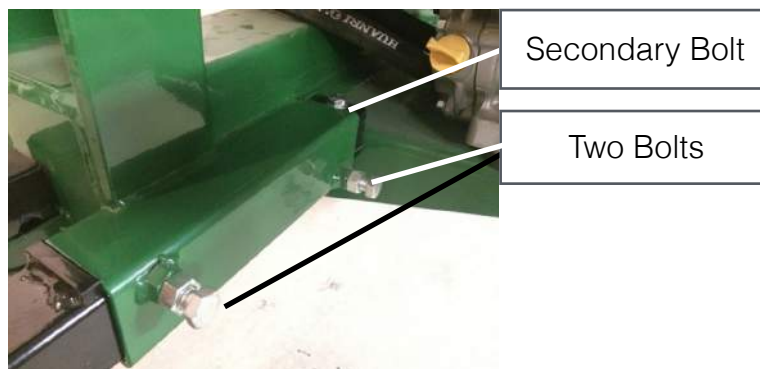
27. Remove the large pulley from the pulley housing on top of the chain guard, feed the cable through and re-install the pulley.



28. Attach the hook to the hook attachment point on the conveyor.



29. Insert the square black tongue into the processor and tighten the two bolts to lock it in place. There is also a hole in the end of the tongue for a bolt to go through as a secondary security measure.



30. Attach tongue jack as pictured below. There are two bolts that hold it securely to the tongue. The leg stand can be used when the processor is in operation.



With the processor now assembled, the engine oil, hydraulic oil and bar oil can be added into the appropriate tanks. Below images show the location and type of oil to use.



20L of ISO32
Hydraulic Oil



Bar Oil



1.4L of 10W-30
Oil

Preparations

Place the machine on a flat and stable surface. Check all oil levels and fill up if necessary. Check that the machine does not have any defects. Remember to use proper protective equipment.

Operating

Adjusting the log length

The log length stop is adjusted with bolts. Unscrew these, move the stop to the desired position and tighten the screws to adjust the log length.

Splitting the log

Place the log on the feed table and push it against the stop. Check that both protective cages are lowered and then cut the log.

Maintenance

Clean the machine and make sure that all sawdust is removed. Keep the machine indoors if possible. If the machine is stored outside, it must be covered with tarpaulin or cover.

Chainsaw Bar

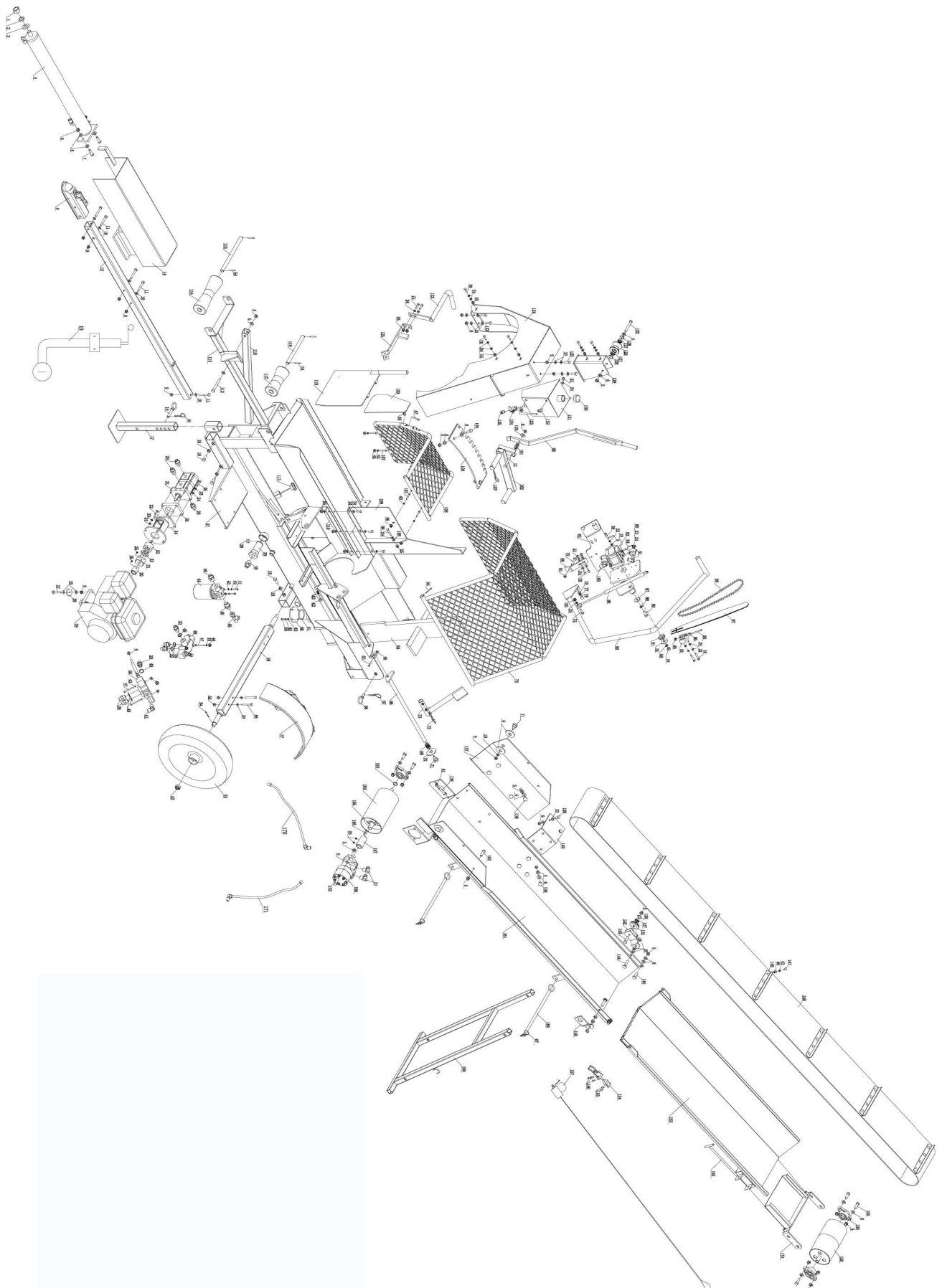
Check before each use that there is no damage or similar to the chainsaw bar. Make sure to always work with a sharp chain, as this makes work much easier.

Adjusting the chain

Release the two bolts on the saw bar and adjust the tension screw. Tighten the screw to tighten the chain and vice versa. Then tighten the two bolts on the saw bar. You should be able to lift the chain about 1/8" to 1/4" from the saw bar. Remember not to tighten the chain too tight.

Spare parts

Spare parts can be ordered by e-mail, web shop or phone call. Just give us the parts number from the drawing below and we make you the order.





WOODLAND MILLS

www.woodlandmills.eu

Woodland Mills Europe AB | Ölmevallavägen 57, SE-439 51 Åsa - Sweden |
Phone +46 31210370 | **Email** info@woodlandmills.eu